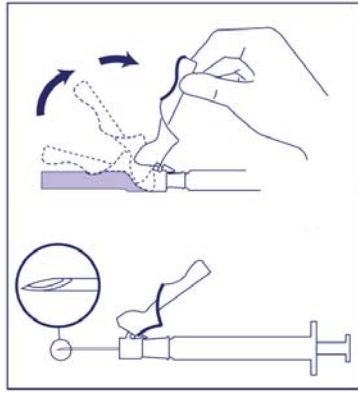


BD Eclipse™ Needle



- Attach the BD Eclipse™ Needle to a BD Luer-Lok™ Syringe. Pull back on the safety cover and remove the needle shield.

Bevel Up = Safety Cover Up

Draw up and administer medication in accordance with established protocol.

- Activate safety mechanism immediately after injection. Center your thumb or forefinger on the textured finger pad and push the safety cover forward over the needle until you hear or feel it lock. Visually confirm that the needle is covered. If unable to activate, discard immediately in an approved sharps container.

Use one handed technique and activate away from self and others. For greatest safety, ONLY use the wide textured finger pad area to activate the safety cover.

- Activation of the protective mechanism may cause minimal splatter of any fluid that is remaining on the needle after injection.

Discard after single use in an approved sharps container in accordance with applicable regulations and institutional policy.

Non-pyrogenic. Do not use if individual packaging is damaged.

Latex Free

Do Not Reuse

CAUTION

The BD Eclipse™ Needle is not to be used with a Luer Slip Syringe as the needle may become disengaged from the syringe when activating the safety cover.

Where local and/or institutional procedures permit/require transportation of the filled syringe, use a passive recapping technique to cover the needle before transporting to the point of administration.

USA only: OSHA standards require that such recapping must be accomplished using a one handed technique. DO NOT hold the needle shield during the recapping process.

USA only: Caution: Federal (USA) law restricts this device to sale by or on the order of physician.

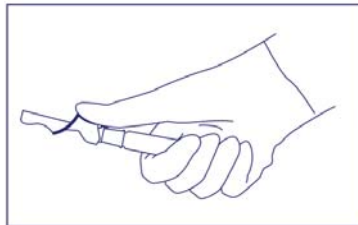
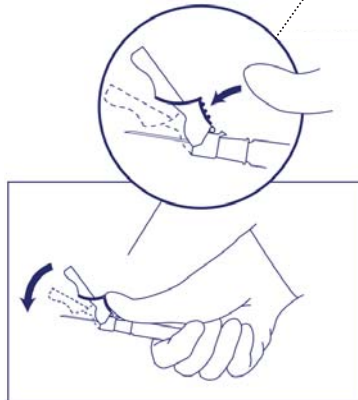
To help avoid HIV (AIDS), HBV (Hepatitis) and other infectious diseases due to accidental needlesticks, activate the protective mechanism immediately after use.

Do not autoclave BD Eclipse™ Needle before use.

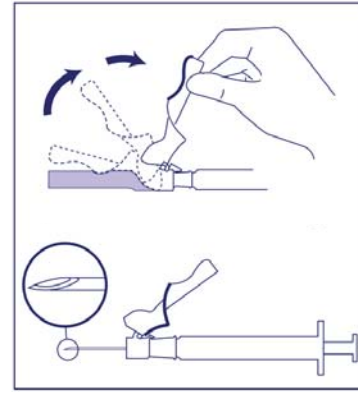
Re-use may lead to infection or other illness/injury.

BD Medical Systems, Inc.
9450 South State Street - Sandy, Utah 84070 - USA

E-05100-100A (2/11)



BD Eclipse™ Needle



- Attach the BD Eclipse™ Needle to a BD Luer-Lok™ Syringe. Pull back on the safety cover and remove the needle shield.

Bevel Up = Safety Cover Up

Draw up and administer medication in accordance with established protocol.

- Activate safety mechanism immediately after injection. Center your thumb or forefinger on the textured finger pad and push the safety cover forward over the needle until you hear or feel it lock. Visually confirm that the needle is covered. If unable to activate, discard immediately in an approved sharps container.

Use one handed technique and activate away from self and others. For greatest safety, ONLY use the wide textured finger pad area to activate the safety cover.

- Activation of the protective mechanism may cause minimal splatter of any fluid that is remaining on the needle after injection.

Discard after single use in an approved sharps container in accordance with applicable regulations and institutional policy.

Non-pyrogenic. Do not use if individual packaging is damaged.

Latex Free

Do Not Reuse

CAUTION

The BD Eclipse™ Needle is not to be used with a Luer Slip Syringe as the needle may become disengaged from the syringe when activating the safety cover.

Where local and/or institutional procedures permit/require transportation of the filled syringe, use a passive recapping technique to cover the needle before transporting to the point of administration.

USA only: OSHA standards require that such recapping must be accomplished using a one handed technique. DO NOT hold the needle shield during the recapping process.

USA only: Caution: Federal (USA) law restricts this device to sale by or on the order of physician.

To help avoid HIV (AIDS), HBV (Hepatitis) and other infectious diseases due to accidental needlesticks, activate the protective mechanism immediately after use.

Do not autoclave BD Eclipse™ Needle before use.

Re-use may lead to infection or other illness/injury.

BD Medical Systems, Inc.
9450 South State Street - Sandy, Utah 84070 - USA

E-05100-100A (2/11)

