

ARROW® PICC with Chlorgard® Technology

4.5 Fr.

40 cm catheter length

.018 inch dia. spring-wire guide

for use with Guidewire products: PW-18080-HS and PW-18080-HN

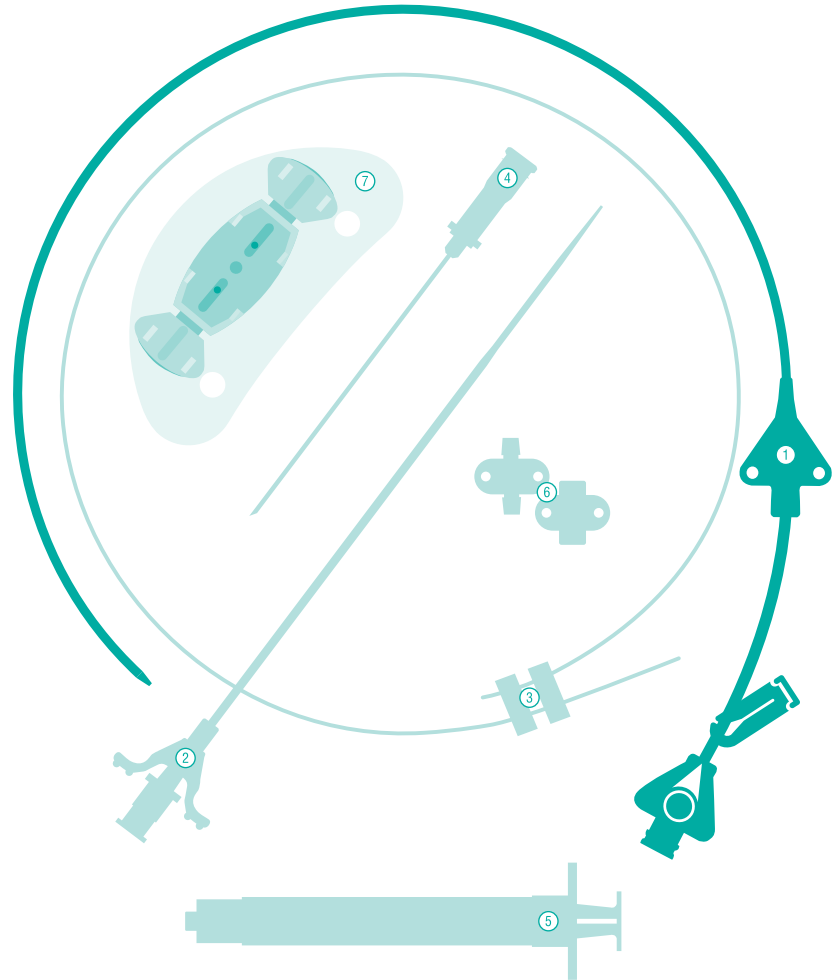
REF PR-44041-HP

Contents:

- ① 1: Indwelling TaperFree™ CG+™ Antimicrobial/Antithrombogenic Catheter¹: 4.5 Fr. x 40 cm Pressure Injectable Radiopaque Polyurethane with Blue FlexTip®, Extension Line Clamp and Contamination Guard
- ② 1: GlideThru™ Peel-Away Sheath: 5 Fr. x 4" (10 cm) Radiopaque over 5 Fr. Dilator
- ③ 1: Spring-Wire Guide: .018" (0.46 mm) dia. x 17-3/4" (45 cm) (Straight Soft Tip on Both Ends)
- ④ 1: Introducer Needle: Echogenic 21 Ga. x 2-3/4" (7 cm) TW
- ⑤ 1: Syringe: 5 mL Luer-Lock
 - 1: Skin Protectant Prep Pad
 - 1: Dust Cap: Non-Vented
- ⑥ 1: SecondSite™ Adjustable Hub: Catheter Clamp and Fastener
 - 1: Chart Sticker
 - 1: Checklist/CLIP Sheet
 - 1: Flow Rate Information Card with Injection Log
 - 1: Patient ID Card
 - 1: Patient Information Booklet
- ⑦ 1: Dressing: STATLOCK®⁶² Catheter Stabilization Device
 - 1: Paper Tape Measure

¹ Licensed under US Patent Nos. 6,706,024; 6,872,195 and 7,329,412.

² A registered trademark of C. R. Bard, Inc.



Caution



Do not reuse



Do not resterilize



Sterilized by ethylene oxide



Keep away from sunlight



Keep dry



Do not use if package is damaged



Not made with natural rubber latex



Consult instructions for use



Store below 25°C (77°F). Avoid excessive heat above 30°C (86°F).

Rx only. Warning: Read all package insert warnings, precautions, and instructions prior to use. Failure to do so may result in severe patient injury or death.

Contraindications: The Arrow® PICC with Chlorgard® Technology is contraindicated for patients with known hypersensitivity to chlorhexidine (refer to product instructions for references).

Sterile. Fluid path components are non-pyrogenic.



Lumen	Priming Volume* (mL)	Flow Rate† (mL/hr)	Pump Flow Rate‡ (mL/hr)	MAX Pressure Injection Flow Rate** (mL/sec)
Distal (17 Ga.)	0.49	1510	6350	5

* Priming volumes are approximate and are done without injection caps.

† Flow rates were determined using room temperature water, 100 cm head height and represent approximate flow capabilities.

‡ Pump flow rates are determined at maximum pump pressure of 10 psig and represent approximate flow capabilities.

**Pressure injection flow rates are determined at the injector pressure setting of 300 psi maximum using media of 11.8 centipoise viscosity, with 152 cm pressure tubing.



2400 Bernville Road
Reading, PA 19605 USA
www.arrowintl.com

IR-44041-101C (5/16)



ARROW® PICC with Chlorgard® Technology

4.5 Fr.

40 cm catheter length

.018 inch dia. spring-wire guide

for use with Guidewire products: PW-18080-HS and PW-18080-HN

REF PR-44041-HP

