



ArrowEVOLUTION™ PICC Set

for use with Guidewire products: PW-18080-HS and PW-18080-HN



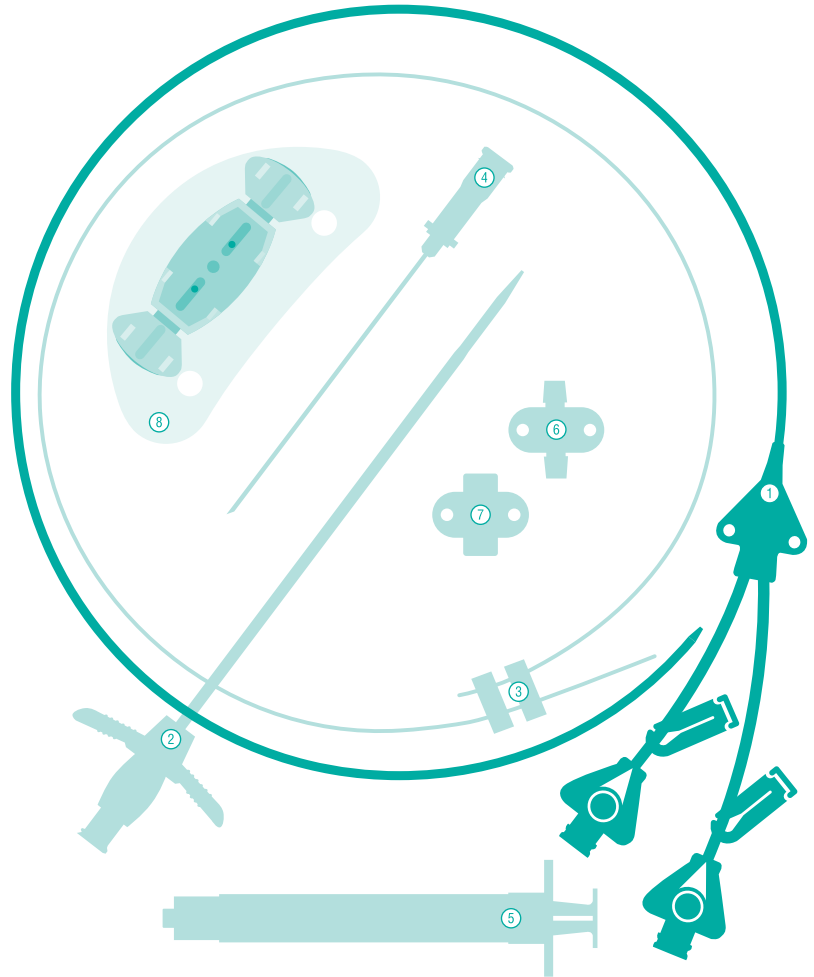
REF PR-45552-HP

Contents:

- ① **1: Two-Lumen Indwelling Antimicrobial Catheter¹:**
5.5 Fr. x 21-21/32" (55 cm) **Pressure Injectable Radiopaque Polyurethane with Blue FlexTip[®], Extension Line Clamps and Contamination Guard**
- ② 1: Peel-Away Sheath: 6 Fr. x 4" (10 cm) Radiopaque over 6 Fr. Dilator
- ③ 1: Spring-Wire Guide: .018" (0.46 mm) dia. x 17-3/4" (45 cm) (Straight Soft Tip on Both Ends)
- ④ 1: Introducer Needle: Echogenic 21 Ga. x 2-3/4" (7 cm) TW
- ⑤ 1: Syringe: 5 mL Luer-Lock
1: Foil-Laminated Pouch 79% Skin Protectant Prep Pad
2: Dust Caps: Non-Vented
- ⑥ 1: Clamp: Catheter
- ⑦ 1: Fastener: Catheter Clamp
1: Chart Sticker
1: Checklist/CLIP Sheet
1: Flow Rate Information Card with Injection Log
1: Patient ID Card
1: Patient Information Booklet
- ⑧ **1: Dressing: STATLOCK^{®2} Catheter Stabilization Device**
1: Paper Tape Measure

¹ Licensed under US Patent Nos. 6,706,024; 6,872,195 and 7,329,412.

² A registered trademark of C. R. Bard, Inc.



STERILE EO

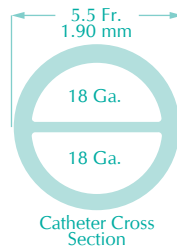


Rx only. Warning: Read all package insert warnings, precautions, and instructions prior to use. Failure to do so may result in severe patient injury or death.

Contraindications: The antimicrobial catheter is contraindicated for patients with known hypersensitivity to chlorhexidine (refer to product instructions for references).

Sterile. Single use – do not resterilize. Sterilized by ethylene oxide. Do not use if package has been previously opened or damaged. Does not contain natural rubber latex. Fluid path components are non-pyrogenic. Contains no medication.

Store between 20 - 25°C (68 - 77°F). Excursions permitted to 15 - 30°C (59 - 86°F). Protect from freezing.



Lumen	Priming Volume* (mL)	Flow Rate† (mL/hr)	Pump Flow Rate‡ (mL/hr)	MAX Pressure Injection Flow Rate** (mL/sec)
Distal (18 Ga.)	0.49	360	3020	5
Proximal (18 Ga.)	0.50	370	2970	5

* Priming volumes are approximate and are done without injection caps.

† Flow rates were determined using room temperature water, 100 cm head height and represent approximate flow capabilities.

‡ Pump flow rates are determined at maximum pump pressure of 10 psig and represent approximate flow capabilities.

** Pressure injection flow rates are determined at the injector pressure setting of 300 psi maximum using media of 11.8 centipoise viscosity, with 152 cm pressure tubing.



2400 Bernville Road
Reading, PA 19605 USA
www.arrowintl.com

IR-45552-101B (5/16)



ArrowEVOLUTION™ Two-Lumen PICC Set

5.5 Fr. | 2 Lumen | 55 cm catheter length | .018 inch dia. spring-wire guide



REF PR-45552-HP

