

Intraosseous Access Tray + Single-Use Power Driver

EZ-IO 25mm Procedure Tray

SKU / Article #: 9001T-VC-005

Considerations

Not made with natural rubber latex.
‡MR Conditional

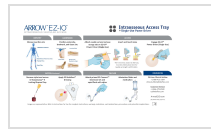
Sales Quantity/Case: 5

Representative photo(s): actual product specifications may vary from that shown in the photo

Intraosseous Access Tray + Single-Use Power Driver	
SKU / Article #: 9001T-VC-005	
Quantity	Component Description
1	EZ-IO™ Power Driver (Single-Use)
1	EZ-IO™ 25mm 15 Ga Intraosseous Needle‡ Set
1	10 mL Luer-Lock Pre-Filled Saline Syringe
1	1.5 mL Applicator 2% CHG and 70% IPA Chloraprep® ¹ One-Step Frepp® Solution
1	SharpsAway® II Locking Disposal Cup
1	EZ-IO™ Wristband
1	EZ-Stabilizer™ Dressing
1	EZ-Connect™ Extension Set (Priming Volume - Approx. 1.0 ml)

¹ A registered trademark of CareFusion or one of its subsidiaries.

Documents



Product Information

ARROW EZ-IO Intraosseous Access Tray

INDICATIONS AND CONTRAINDICATIONS

INDICATIONS: For use in the femur, humerus, tibia, and radius of patients with fractures of these bones who are unable to receive intravenous fluids or medications through the venous system.

CONTRAINDICATIONS: Do not use in patients with known or suspected infection at the site of insertion, in patients with known or suspected osteomyelitis, or in patients with known or suspected bone metastasis.

WARNINGS

Do not use in patients with known or suspected infection at the site of insertion, in patients with known or suspected osteomyelitis, or in patients with known or suspected bone metastasis.

PRECAUTIONS

Do not use in patients with known or suspected infection at the site of insertion, in patients with known or suspected osteomyelitis, or in patients with known or suspected bone metastasis.

Code	Item	Quantity	Unit
1	ARROW EZ-IO Intraosseous Access Tray	1	Tray
2	Single-Use Power Driver	1	Driver
3	ARROW EZ-IO Intraosseous Access Tray	1	Tray
4	Single-Use Power Driver	1	Driver

© 2026 Teleflex Incorporated. All Rights Reserved.

The products in this catalog may not be available in all countries. Please contact your local representative.

Indications, contraindications, warnings and instructions for use can be found in the Product Instructions for Use available under the Documents section on this page, where an IFU is available.