



## Internal Jugular Puncture

### INTERNAL JUGULAR KIT: 16GA X 6" (16CM)

SKU / Article #: AK-04050-S

#### Highlights

CE Mark

#### Considerations

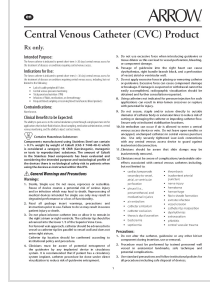
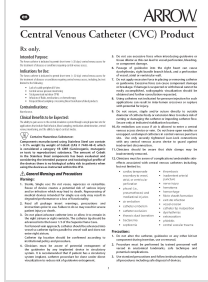
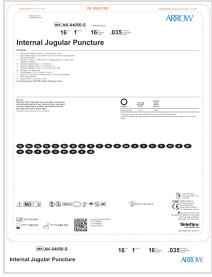
Not made with natural rubber latex.

**Sales Quantity/Case: 5**

*Representative photo(s): actual product specifications may vary from that shown in the photo*

Internal Jugular Puncture SKU / Article #: AK-04050-S	
Quantity	Component Description
1	One-Lumen Catheter: 16 Ga. (1.8 mm OD) x 16 cm
1	Spring-Wire Guide: .035" (0.89 mm) dia. x 12" (30 cm) (Straight Soft Tip on Both Ends)
1	Catheter: 18 Ga. x 1-9/16" (3.97 cm) Radiopaque over 20 Ga. RW Introducer Needle
1	Injection Needle: 25 Ga. x 1" (2.54 cm)
1	Injection Needle: 22 Ga. x 1-1/2" (3.81 cm)
1	Introducer Needle: 18 Ga. x 1-1/2" (3.81 cm) XTW
2	Syringe: 3 mL Luer-Lock
1	Tissue Dilator: 7 Fr. (2.3 mm) x 10.2 cm
1	Drape: 18" x 26" (46 cm x 66 cm) with 3" (7.6 cm) fenestration
1	Prep Sponge Swab
3	Gauze Pad: 2" x 2" (5 cm x 5 cm)

# Documents



The products in this catalog may not be available in all countries. Please contact your local representative.

Indications, contraindications, warnings and instructions for use can be found in the Product Instructions for Use available under the Documents section on this page, where an IFU is available.