



One-Lumen CVC

CVC KIT: 16 GA X 6IN (16 CM)

SKU / Article #: AK-04306-SP

Highlights

Sharps Safety

Considerations

Not made with natural rubber latex.
Includes Lidocaine

Sales Quantity/Case: 10

Representative photo(s): actual product specifications may vary from that shown in the photo

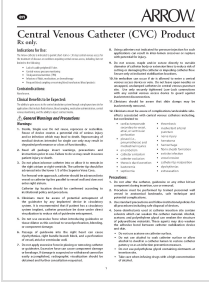
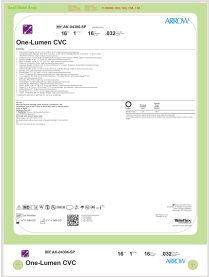
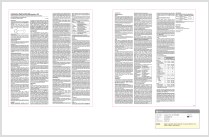
One-Lumen CVC

SKU / Article #: AK-04306-SP

Quantity	Component Description
1	One-Lumen Catheter: 16 Ga. (1.8 mm OD) x 16 cm
1	Spring-Wire Guide, Marked: .032" (0.81 mm) dia. x 17-3/4" (45 cm) (Straight Soft Tip on One End - "J" Tip on Other) with Arrow Advancer
1	Catheter: 18 Ga. x 2-1/2" (6.35 cm) Radiopaque over 20 Ga. RW Introducer Needle
1	Injection Needle: 25 Ga. x 1" (2.54 cm)
1	Blunt Fill Needle: 18 Ga. x 1-1/2" (3.81 cm)
1	Pressure Transduction Probe
1	Introducer Needle: 18 Ga. x 2-1/2" (6.35 cm) XTW and 5 mL Arrow® Raulerson Spring-Wire Introduction Syringe
1	Injection Needle: 22 Ga. x 1-1/2" (3.81 cm) and 5 mL Luer-Slip Syringe
1	Syringe: 3 mL Luer-Lock
1	Tissue Dilator: 7 Fr. (2.3 mm) x 10.2 cm
1	5 mL 1% Lidocaine HCl Solution and Alcohol Prep
1	3 mL Applicator 2% CHG and 70% IPA Chloraprep® ¹ One-Step Solution with Hi-Lite Orange™ Tint
1	Dust Cap: Non-Vented
1	SharpsAway® II Locking Disposal Cup
1	SharpsAway® Disposal Cup
1	Drape: 19-5/8" x 29-1/2" (50 cm x 75 cm) with adhesive
1	Drape: 21" x 36" (53 cm x 91 cm) with 3" (7.6 cm) fenestration, with adhesive
1	Safety Scalpel: #11
3	Gauze Pad: 4" x 4" (10 cm x 10 cm)
1	Suture: 3-0 Braided Silk with Straight Needle

¹ A registered trademark of CareFusion or one of its subsidiaries.

Documents



The products in this catalog may not be available in all countries. Please contact your local representative.

Indications, contraindications, warnings and instructions for use can be found in the Product Instructions for Use available under the Documents section on this page, where an IFU is available.