

## One-Lumen CVC

CVC KIT: 24GA X 5" (12CM)

SKU / Article #: AK-04660-S

### Highlights

CE Mark

### Considerations

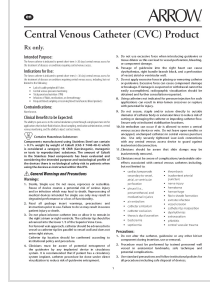
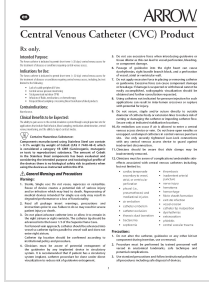
Not made with natural rubber latex.

**Sales Quantity/Case: 5**

*Representative photo(s): actual product specifications may vary from that shown in the photo*

| One-Lumen CVC               |   |
|-----------------------------|---|
| SKU / Article #: AK-04660-S |   |
| Quantity                    | Component Description   |
| 1                           | One-Lumen Catheter: 24 Ga. (0.8 mm OD) x 12 cm  |
| 1                           | Spring-Wire Guide: .018" (0.46 mm) dia. x 13-3/4" (35 cm) (Straight Soft Tip on One End - "J" Tip on Other) |
| 1                           | Introducer Needle: 21 Ga. x 1-1/2" (3.81 cm) TW   |
| 2                           | Syringe: 3 mL Luer-Lock   |
| 1                           | SecondSite™ Adjustable Hub: Catheter Clamp  |
| 1                           | Drape: 18" x 26" (46 cm x 66 cm) with 3" (7.6 cm) fenestration  |
| 1                           | Scalpel: #11  |
| 1                           | Prep Sponge Swab  |
| 3                           | Gauze Pad: 2" x 2" (5 cm x 5 cm)  |

# Documents



The products in this catalog may not be available in all countries. Please contact your local representative.

Indications, contraindications, warnings and instructions for use can be found in the Product Instructions for Use available under the Documents section on this page, where an IFU is available.