

MAC™ Two-Lumen Central Venous Access Kit with Integral Hemostasis Valve for use with 7 - 8 Fr. Catheters

MULTI-LUMEN/PSI KIT

SKU / Article #: CA-11142

Highlights

CE Mark

Considerations

Not made with natural rubber latex.

Sales Quantity/Case: 10

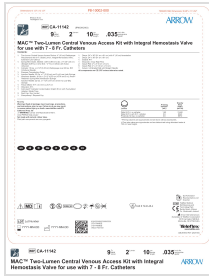
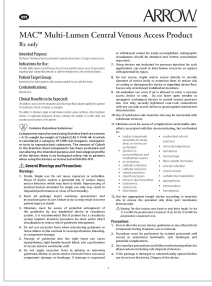
Representative photo(s): actual product specifications may vary from that shown in the photo

MAC™ Two-Lumen Central Venous Access Kit with Integral Hemostasis Valve for use with 7 - 8 Fr. Catheters

SKU / Article #: CA-11142

Quantity	Component Description
1	Two-Lumen Central Venous Access Device: 4" (10 cm) Radiopaque Polyurethane with 9 Fr. Distal Lumen, Integral Hemostasis Valve, Extension Line Clamps
1	Spring-Wire Guide, Marked: .035" (0.89 mm) dia. x 17-3/4" (45 cm) (Straight Soft Tip on One End - "J" Tip on Other) with Arrow Advancer
1	Catheter: 18 Ga. x 2-1/2" (6.35 cm) Radiopaque over 20 Ga. RW Introducer Needle
1	Pressure Transduction Probe
1	Introducer Needle: 18 Ga. x 2-1/2" (6.35 cm) XTW and 5 mL Arrow® Raulerson Spring-Wire Introduction Syringe
1	Injection Needle: 25 Ga. x 1" (2.54 cm) and 3 mL Luer-Lock Syringe
1	Injection Needle: 22 Ga. x 1-1/2" (3.81 cm) and 5 mL Luer-Slip Syringe
1	Tissue Dilator: 9 Fr. (3.0 mm) x 20.7 cm
1	Obturator: 8 Fr.
1	Cath-Gard® Catheter Contamination Shield: 80 cm with Tuohy-Borst Adapter, Sterile Tape
3	Dust Cap: Non-Vented
1	SharpsAway® Disposal Cup
1	Drape: 24" x 36" (61 cm x 91 cm) with 4" (10 cm) fenestration
1	Drape: 24" x 36" (61 cm x 91 cm)
1	Scalpel: #11
1	Stopcock: 4-way High-Flow
2	Gauze Pad: 2" x 2" (5 cm x 5 cm)
5	Gauze Pad: 4" x 4" (10 cm x 10 cm)
1	Suture: 3-0 Braided Silk with Straight Needle

Documents



The products in this catalog may not be available in all countries. Please contact your local representative.

Indications, contraindications, warnings and instructions for use can be found in the Product Instructions for Use available under the Documents section on this page, where an IFU is available.