

Representative photo(s): actual product specifications may vary from that shown in the photo

Pediatric Two-Lumen Hemodialysis Catheter for High Volume Infusions

HEMODIALYSIS SET: 2-LUMEN 9 FR X 13 CM

SKU / Article #: CD-13902

Highlights

CE Mark

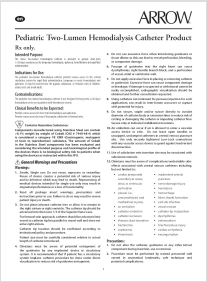
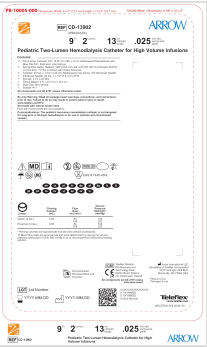
Considerations

Not made with natural rubber latex.

Sales Quantity/Case: 5

Pediatric Two-Lumen Hemodialysis Catheter for High Volume Infusions SKU / Article #: CD-13902	
Quantity	Component Description
1	Two-Lumen Catheter: 9 Fr. (3.07 mm OD) x 13 cm Radiopaque Polyurethane with Blue FlexTip®, Extension Line Clamps
1	Spring-Wire Guide, Marked: .025" (0.64 mm) dia. x 23-5/8" (60 cm) (Straight Soft Tip on One End - "J" Tip on Other) with Arrow Advancer
1	Catheter: 20 Ga. x 1-3/4" (4.45 cm) Radiopaque over 22 Ga. TW Introducer Needle
1	Introducer Needle: 20 Ga. x 1-1/2" (3.81 cm) XTW
1	Syringe: 3 mL Luer-Slip
1	Tissue Dilator: 9 Fr. (3.0 mm) x 10.2 cm
2	Dust Cap: Non-Vented
1	Scalpel: #11

Documents



The products in this catalog may not be available in all countries. Please contact your local representative.

Indications, contraindications, warnings and instructions for use can be found in the Product Instructions for Use available under the Documents section on this page, where an IFU is available.