

Pediatric Three-Lumen CVC

CVC SET: 3-LUMEN 4FR X 8CM

SKU / Article #: CS-15403

Highlights

CE Mark

Considerations

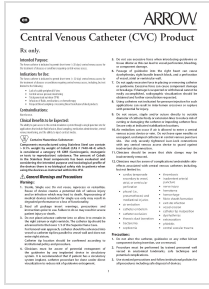
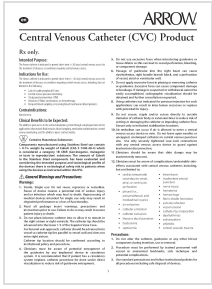
Not made with natural rubber latex.

Sales Quantity/Case: 5

Representative photo(s): actual product specifications may vary from that shown in the photo

Pediatric Three-Lumen CVC SKU / Article #: CS-15403	
Quantity	Component Description
1	Three-Lumen Catheter: 4 Fr. (1.5 mm OD) x 8 cm
1	Spring-Wire Guide: .018" (0.46 mm) dia. x 17-3/4" (45 cm) (Straight Soft Tip on One End - "J" Tip on Other) with Arrow Advancer
1	Catheter: 22 Ga. x 1-3/4" (4.45 cm) Radiopaque over 25 Ga. RW Introducer Needle
1	Introducer Needle: 21 Ga. x 1-1/2" (3.81 cm) TW
1	Syringe: 5 mL Luer-Slip
1	Tissue Dilator: 5 Fr. (1.8 mm) x 7.5 cm
1	Tissue Dilator: 5 Fr. (1.8 mm) x 4.1 cm
3	Dust Cap: Non-Vented
1	SecondSite™ Adjustable Hub: Catheter Clamp
1	SecondSite™ Adjustable Hub: Fastener

Documents



The products in this catalog may not be available in all countries. Please contact your local representative.

Indications, contraindications, warnings and instructions for use can be found in the Product Instructions for Use available under the Documents section on this page, where an IFU is available.