

Pediatric Two-Lumen CVC for Femoral Vein Insertion

CVC SET: 2-LUMEN 4 FR X 30 CM

SKU / Article #: CS-16402

Highlights

CE Mark

Considerations

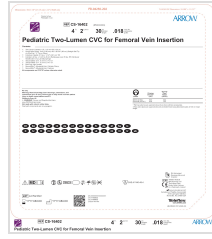
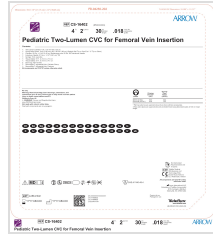
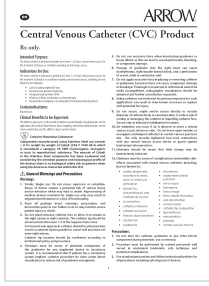
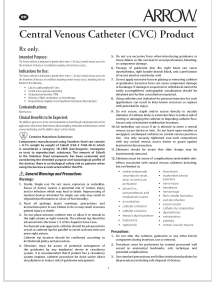
Not made with natural rubber latex.

Sales Quantity/Case: 5

Pediatric Two-Lumen CVC for Femoral Vein Insertion	
SKU / Article #: CS-16402	
Quantity	Component Description
1	Two-Lumen Catheter: 4 Fr. (1.5 mm OD) x 30 cm
1	Spring-Wire Guide: .018" (0.46 mm) dia. x 26-3/4" (68 cm) (Straight Soft Tip on One End - "J" Tip on Other)
1	Introducer Needle: 21 Ga. x 1-1/2" (3.81 cm) TW
1	Catheter: 22 Ga. x 1-3/4" (4.45 cm) Radiopaque over 25 Ga. RW Introducer Needle with 5 mL Luer-Slip Syringe
1	Tissue Dilator: 5 Fr. (1.8 mm) x 7.5 cm
1	Tissue Dilator: 5 Fr. (1.8 mm) x 4.1 cm
2	Dust Cap: Non-Vented
1	SecondSite™ Adjustable Hub: Catheter Clamp
1	SecondSite™ Adjustable Hub: Fastener

Representative photo(s): actual product specifications may vary from that shown in the photo

Documents



The products in this catalog may not be available in all countries. Please contact your local representative.

Indications, contraindications, warnings and instructions for use can be found in the Product Instructions for Use available under the Documents section on this page, where an IFU is available.