

## Two-Lumen Antecubital CVC

### CVC SET: 2-LUMEN 7 FR X 60 CM

SKU / Article #: CS-17752

### Highlights

CE Mark

### Considerations

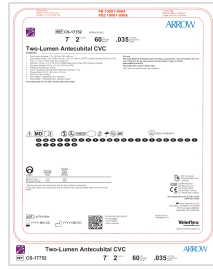
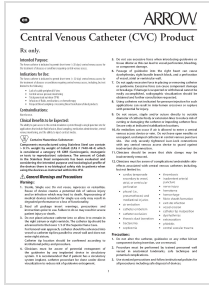
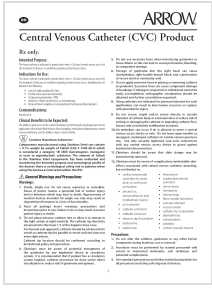
Not made with natural rubber latex.

**Sales Quantity/Case: 5**

Two-Lumen Antecubital CVC SKU / Article #: CS-17752	
Quantity	Component Description
1	Two-Lumen Catheter: 7 Fr. (2.5 mm OD) x 60 cm
1	Spring-Wire Guide: .035" (0.89 mm) dia. x 39-1/2" (100 cm) PTFE-Coated (Straight Soft Tip on One End - "J" Tip on Other) with Arrow Advancer
1	Catheter: 18 Ga. x 2-1/2" (6.35 cm) Radiopaque over 20 Ga. RW Introducer Needle
1	Introducer Needle: 18 Ga. x 2-1/2" (6.35 cm) XTW
1	Pressure Transduction Probe
1	Arrow® Raulerson Spring-Wire Introduction Syringe: 5 mL
1	Tissue Dilator: 8.5 Fr. (2.8 mm) x 10.2 cm
2	Dust Cap: Non-Vented
1	SecondSite™ Adjustable Hub: Fastener
1	SecondSite™ Adjustable Hub: Catheter Clamp

*Representative photo(s): actual product specifications may vary from that shown in the photo*

# Documents



The products in this catalog may not be available in all countries. Please contact your local representative.

Indications, contraindications, warnings and instructions for use can be found in the Product Instructions for Use available under the Documents section on this page, where an IFU is available.