

*Representative photo(s): actual product specifications may vary from that shown in the photo*

## Three-Lumen CVC

**CVC SET: 3-LUMEN 7FR X 20CM**

SKU / Article #: EU-15703-CVET

### Highlights

CE Mark

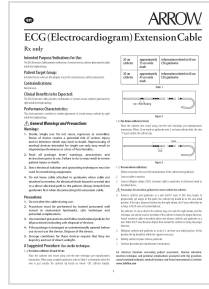
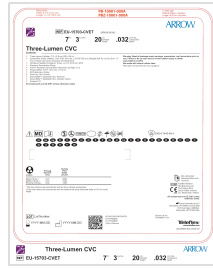
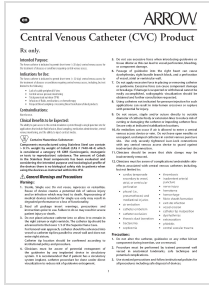
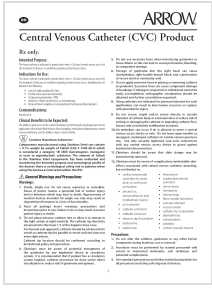
### Considerations

Not made with natural rubber latex.

**Sales Quantity/Case: 5**

Three-Lumen CVC	
SKU / Article #: EU-15703-CVET	
Quantity	Component Description
1	Three-Lumen Catheter: 7 Fr. (2.5 mm OD) x 20 cm
1	Spring-Wire Guide, Marked: .032" (0.81 mm) dia. x 23-5/8" (60 cm) (Straight Soft Tip on One End - "J" Tip on Other) with Arrow Advancer with ECG Mark
1	Introducer Needle: Echogenic 18 Ga. x 2-1/2" (6.35 cm) XTW
1	Pressure Transduction Probe
1	Arrow® Raulerson Spring-Wire Introduction Syringe: 5 mL
1	Tissue Dilator: 8.5 Fr. (2.8 mm) x 10.2 cm
1	ECG Extension Cable
2	Dust Cap: Non-Vented
1	SecondSite™ Adjustable Hub: Fastener
1	SecondSite™ Adjustable Hub: Catheter Clamp
1	Scalpel: #11

# Documents



The products in this catalog may not be available in all countries. Please contact your local representative.

Indications, contraindications, warnings and instructions for use can be found in the Product Instructions for Use available under the Documents section on this page, where an IFU is available.